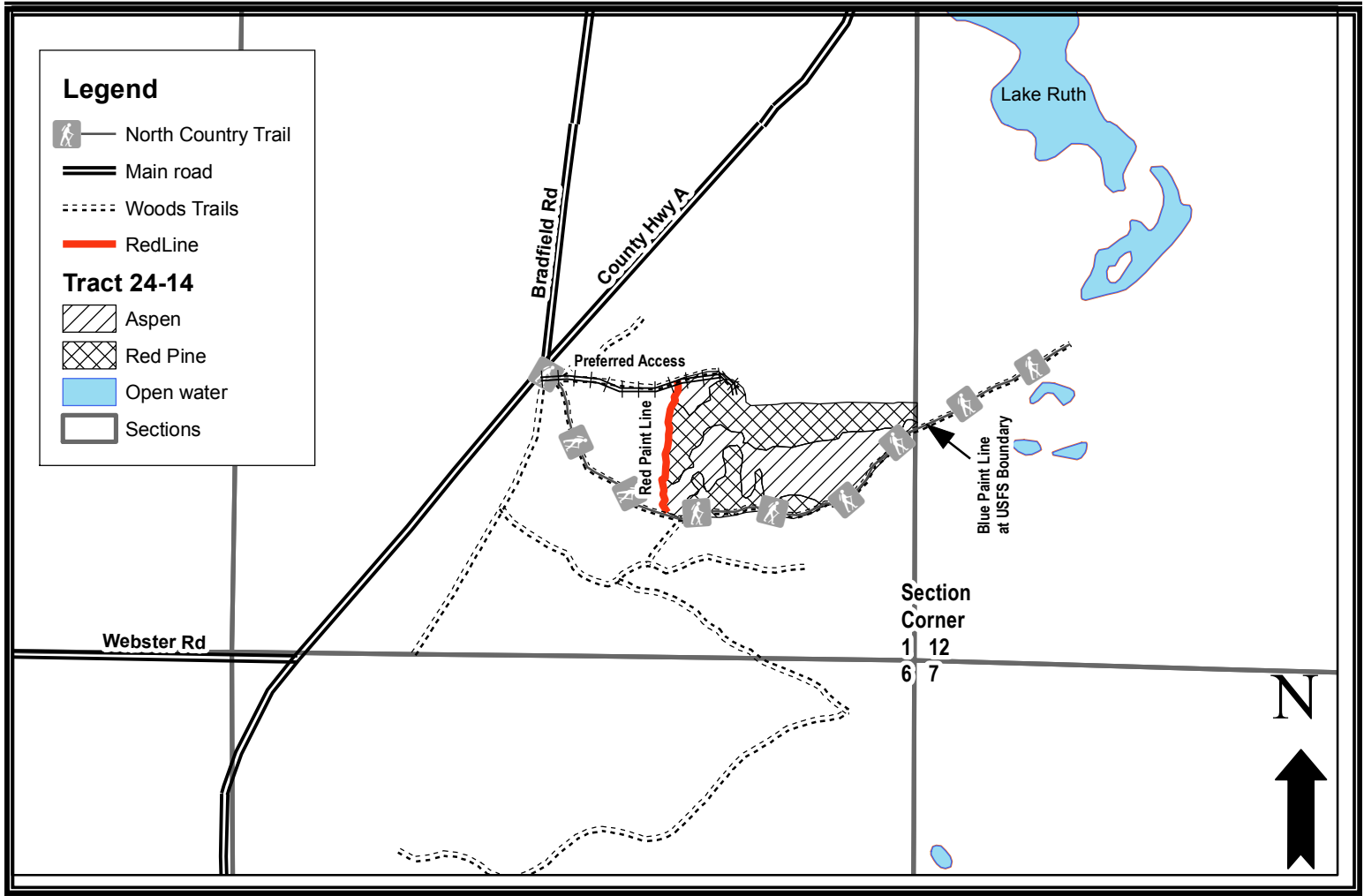


# Bayfield County Forestry and Parks

Forester: LeBouton	Twp: 46N	Range: 09W	Sec: 1	Estimated Volumes:
Acres: 36	Township: Hughes			
Soil: Sand	Compartment: 131	Stand: 1 & 7		
Topography: Rolling	Tract Number: 24-14	Reforestation Code: Site prep and Plant		
Scale: 4" = 1 mile	Contract Number:			

Species	4" Cords	WT Tons
Red Pine	450*	1918
Aspen	200**	849

\*Average red pine diameter = 8 inches  
\*\* includes approximately 5 cords of red maple



## Harvest requirements:

- This is a ticket sale.
- Sale boundaries are a red paint line to the west, the North Country Trail to the south, a blue paint line against US Forest Service land to the east, and a cover type change to the north. A small corner of aspen is included to the northwest between the red line and south of the access road.
- Do not allow equipment or cut trees to cross the blue property line.
- Cut all trees two inches DBH and greater.
- For the safety of site prep, helicopters, and planting crews, cut all snags that can safely be cut.
- Do not damage any survey monumentation.
- Prior to moving equipment on to or off the sale area, scrape or brush debris and soil from exterior surfaces.
- All roads are in place. This contract requires county authorization for all road/landing construction and places a number of other requirements on road construction and closure.
- The North Country Trail is marked with blue painted trees along the south boundary of the sale. Do not cut any blue-painted trees. Keep slash height 18" or less within 25ft of the North Country Trail. Do not operate machinery on trail. Do not cross trail with machinery.
- Decking of wood along town roads will not be allowed without permission of Bayfield County.
- Harvested pine cannot be kept on the Bayfield County Forest for more than three weeks from May 1<sup>st</sup> to August 31<sup>st</sup>.