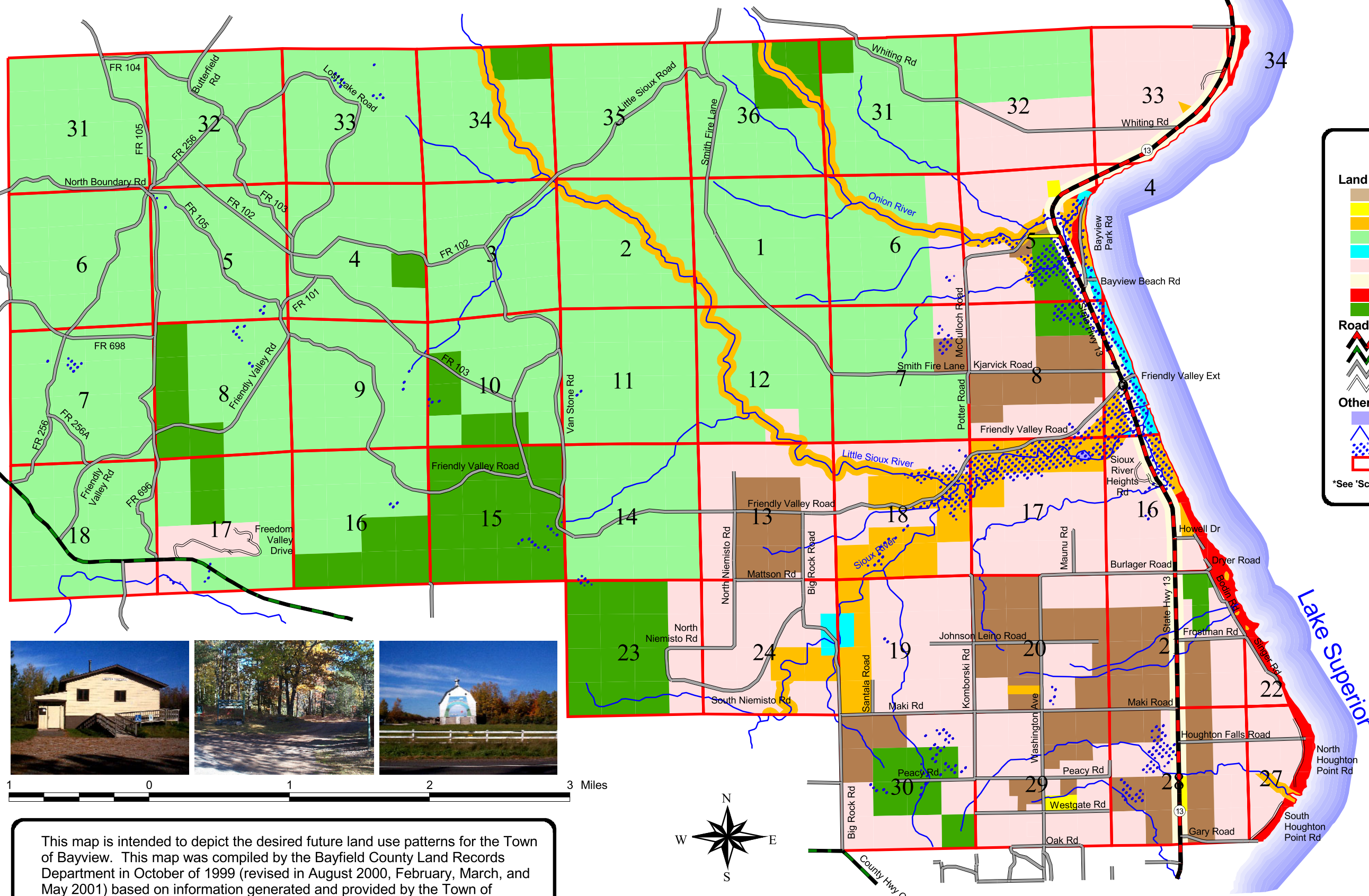


# Town of Bayview---Proposed Land Use



**LEGEND**

**Land Use Categories**

- Agricultural
- Commercial
- Conservancy
- Public Forest
- Recreational
- Scenic Rural Residential
- Scenic Corridor\*
- Waterfront Residential
- Woodlands

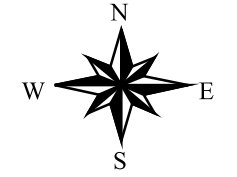
**Roads**

- State
- County
- Town
- Private

**Other Symbols**

- Lakes
- Streams
- Wetlands
- Sections

\*See 'Scenic Corridor' Classification in Plan



This map is intended to depict the desired future land use patterns for the Town of Bayview. This map was compiled by the Bayfield County Land Records Department in October of 1999 (revised in August 2000, February, March, and May 2001) based on information generated and provided by the Town of Bayview Planning Committee.