

# Bayfield County Forestry and Parks Department

Forester: LeBouton		Compartment: 72		Stand: 9, 10, 15, 19, 20		Tract Number: 6-21
Twp: 49N	Range: 5W	Sec: 14	Township: Bayview	Contract Number:		
Topography: flat to steep		Reforestation Code: Natural regen		Soil: Sandy loam		Acres: 179

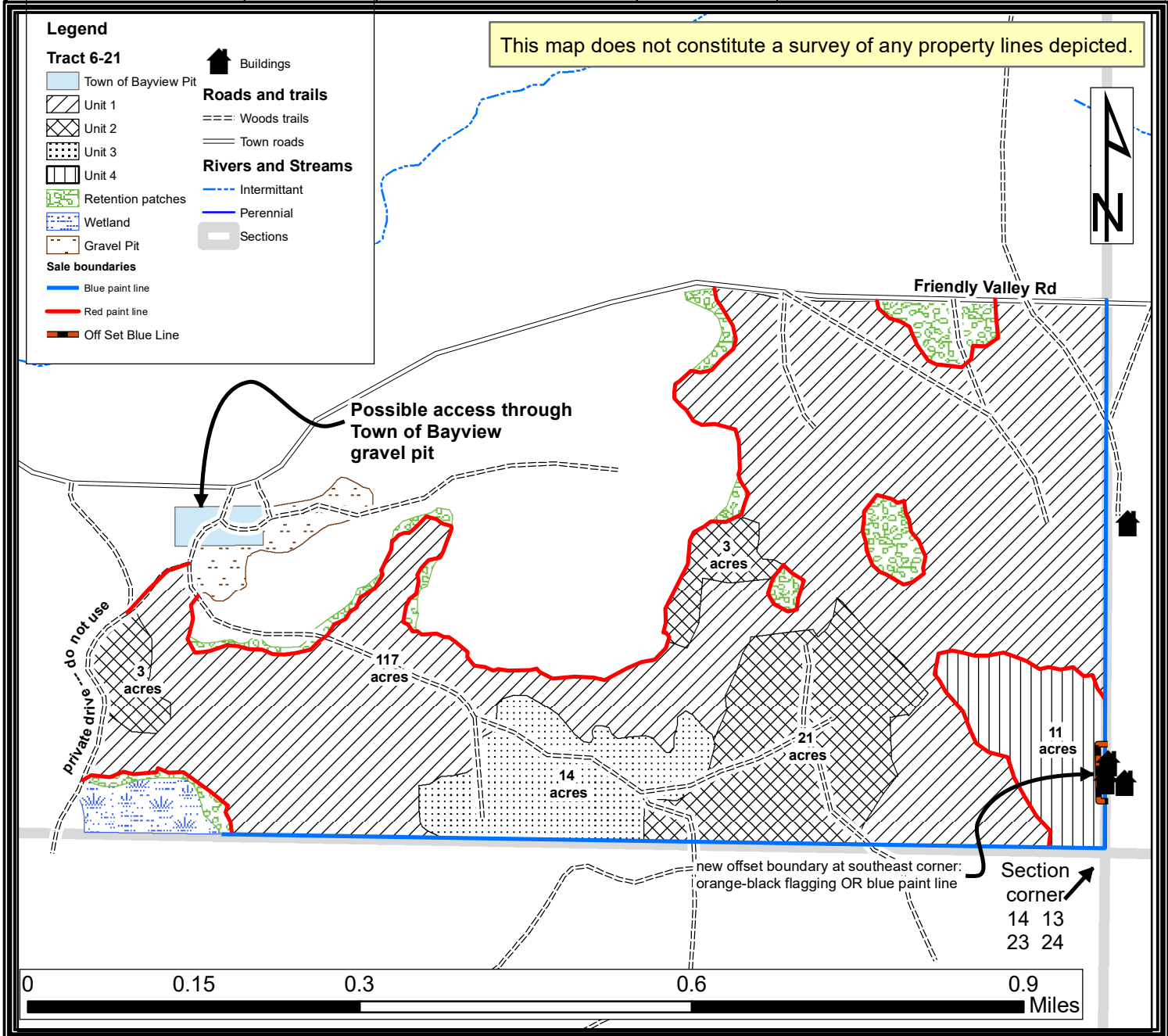
Estimated Volumes			
Species	Whole Tree (Tons)	4" Roundwood (Tons)	MBF
Aspen (average 7" dbh)	6235	3815	
Mixed hardwood	*3025	1440	** 19
Red pine (avg. 18" dbh)	520	400	
Red oak	1780	845	117

\* approximately 40% soft maple, 25% white birch, 23% hard maple, 10% ash, 2% basswood.  
 \*\*approximately 52% basswood, 23% red maple, 22% sugar maple, and 3% white birch.  
 ++ approximately 76% red pine and 24% white pine.

Harvested pine must be hauled within three weeks between May 1<sup>st</sup> and August 31<sup>st</sup>.

Permission to haul through Bayview Pit is being secured by County, with approval anticipated by June 1<sup>st</sup>. All forest roads must be returned to pre-sale conditions as determined solely by County.

No seasonal restrictions unless oak wilt restrictions are activated.



## TRACT 06-21 – SUPPLEMENTAL REQUIREMENTS

The following terms and conditions supplement those provided in the Bayfield County Timber Sale Contract.

### A. PRESCRIPTION:

1. Unit 1: aspen coppice harvest (average aspen diameter is 7.0 inches.) Retain approximately 20 sq. ft./acre of basal area on average of large-diameter red pine, white pine, and red oak in patches. Release 3" to 5" diameter red oak saplings.
2. Unit 2: red oak seed tree harvest, average diameter 15 inches (1/2 of trees are 16" to 20" diameter.) Retain approximately 30 sq. ft./acre of basal area of oak overstory trees.
3. Unit 3: red pine marked thinning, average diameter 22 inches, maximum diameter 28 inches. Retain approximately 100 sq. ft./acre of basal area of large red pine.
4. Unit 4: scrub oak seed tree harvest. Retain approximately 10 sq. ft./acre of basal area.

### B. HARVEST REQUIREMENTS:

1. NO internal harvest unit lines were painted except to delineate unit 4 and three unharvested patches.
2. Units 1, 2, and 3:
  - i. HARVEST all aspen and all ORANGE PAINTED oak.
  - ii. HARVEST all other hardwood (except oak) larger than 2" diameter.
  - iii. HARVEST all orange-painted red pine and white pine DO NOT DAMAGE white pine or red oak saplings.
  - iv. DO NOT DAMAGE oak saplings. DO NOT DAMAGE hemlock or balsam fir.
3. Unit 4: HARVEST all trees EXCEPT purple-marked leave trees (approximately 10 sq. ft./acre of basal area retained.)
4. In all units, leave all snags unless they pose a safety hazard to logging operations.

### C. HARVEST AND OPERATIONAL REQUIREMENTS AND SEASONAL RESTRICTIONS:

1. In 2018, oak wilt was officially confirmed in Bayfield County. Currently, this timber sale is located more than six miles away from the closest known infected tree. However, over the duration of this contract, additional infections could be discovered. Over the duration of this contract, including extensions, if oak wilt is officially confirmed within a six-mile radius of this timber sale as determined by the county, the following seasonal restriction will be applied: no harvesting operations will be allowed between April 15 (or as otherwise determined by the county) and July 15. If required, oak wilt restrictions would apply to the entire sale due to scattered oak retained throughout.
2. IF OAK WILT RESTRICTIONS ARE NOTACTIVATED, there are no seasonal restrictions for this harvest.
3. Sale boundaries are blue-painted private property line to the south and east; red paint lines; and roads, as shown on map.
4. If harvest will utilize the whole tree, 1 in 10 tops must be left scattered throughout the sale.
5. Blue lines or orange flag line indicate private property. No equipment or felled tree may cross the line.

### D. ACCESS AND ROADS:

1. This contract requires County authorization for all road/landing construction and places a number other requirements on road construction and closure.
2. Decking of wood along town roads will not be allowed without permission from Bayfield County.
3. Road on west boundary is a private driveway. Do not use.

### E. OTHER:

1. To comply with Best Management Practices for Invasive Species: Prior to moving equipment on to or off the sale area, scrape or brush soil and debris from exterior surfaces to the extent practical.
2. Do not damage survey monumentation.

