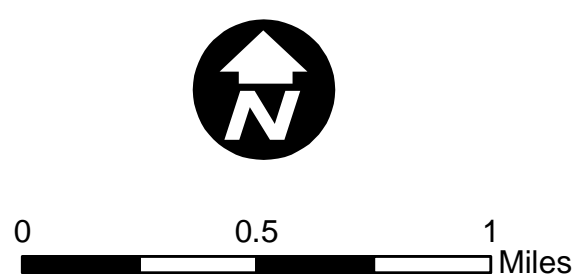
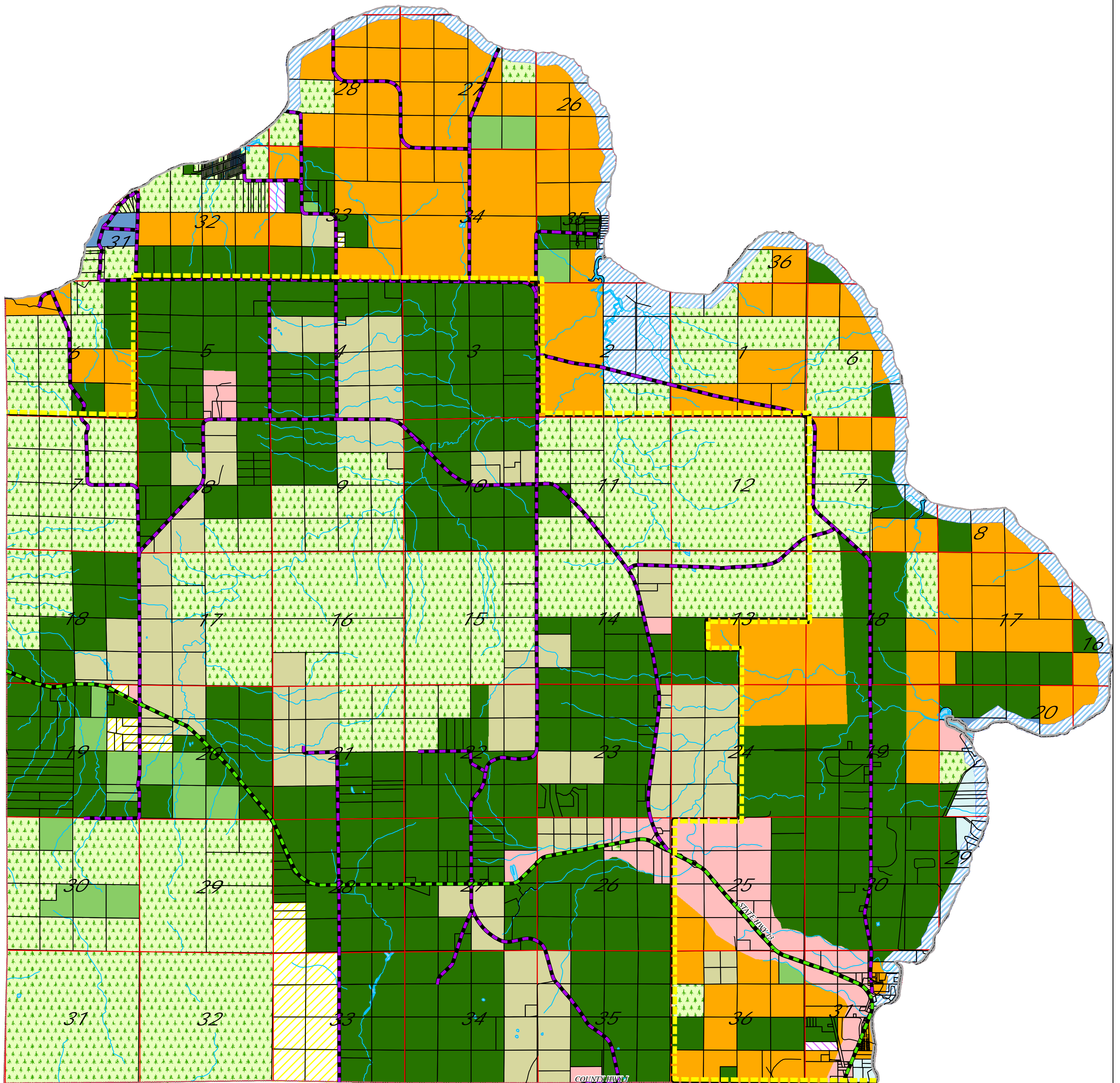
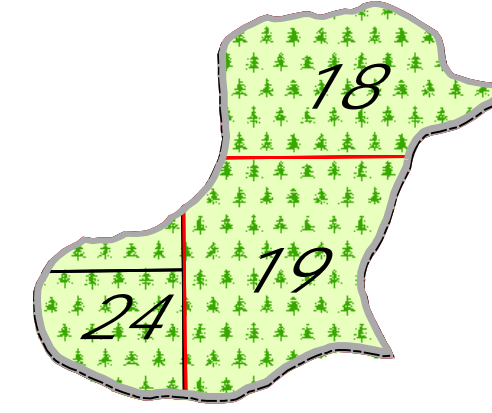
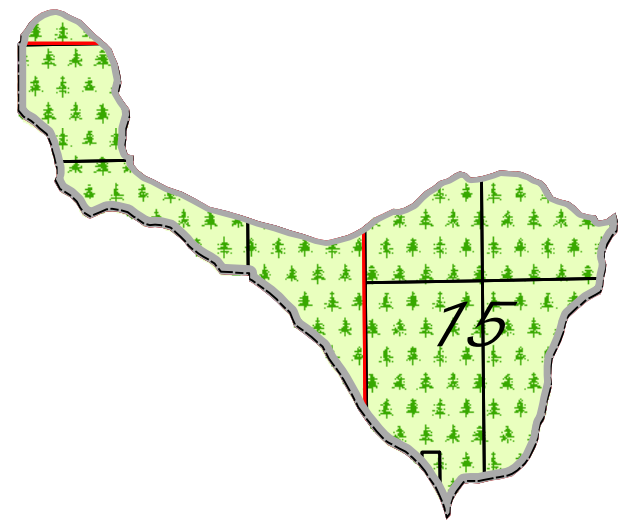


# Town of Russell Future Land Use



- Public Forest
- Industrial (or Private) Forest
- Forest - Limited Residential
- Agricultural Core
- Agricultural - Limited Residential
- Rural - Moderate Residential
- Shoreland - Concentrated Residential
- Shoreland Recreation

- Village Mixed Use
- Village Residential
- Commercial
- Industrial
- Mining Overlay
- Natural Resources Protection
- Tribal Lands Overlay
- Municipal / Institutional

- Roads
- State
  - Other Roads
  - Private
- \*  
 Water  
 Section Line

- Municipal Boundary
- County Boundary
- Sanitary District
- Reservation Boundary

Nov 09, 2009

\*The NRP Overlay shall be referenced on a separate map