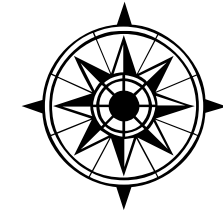
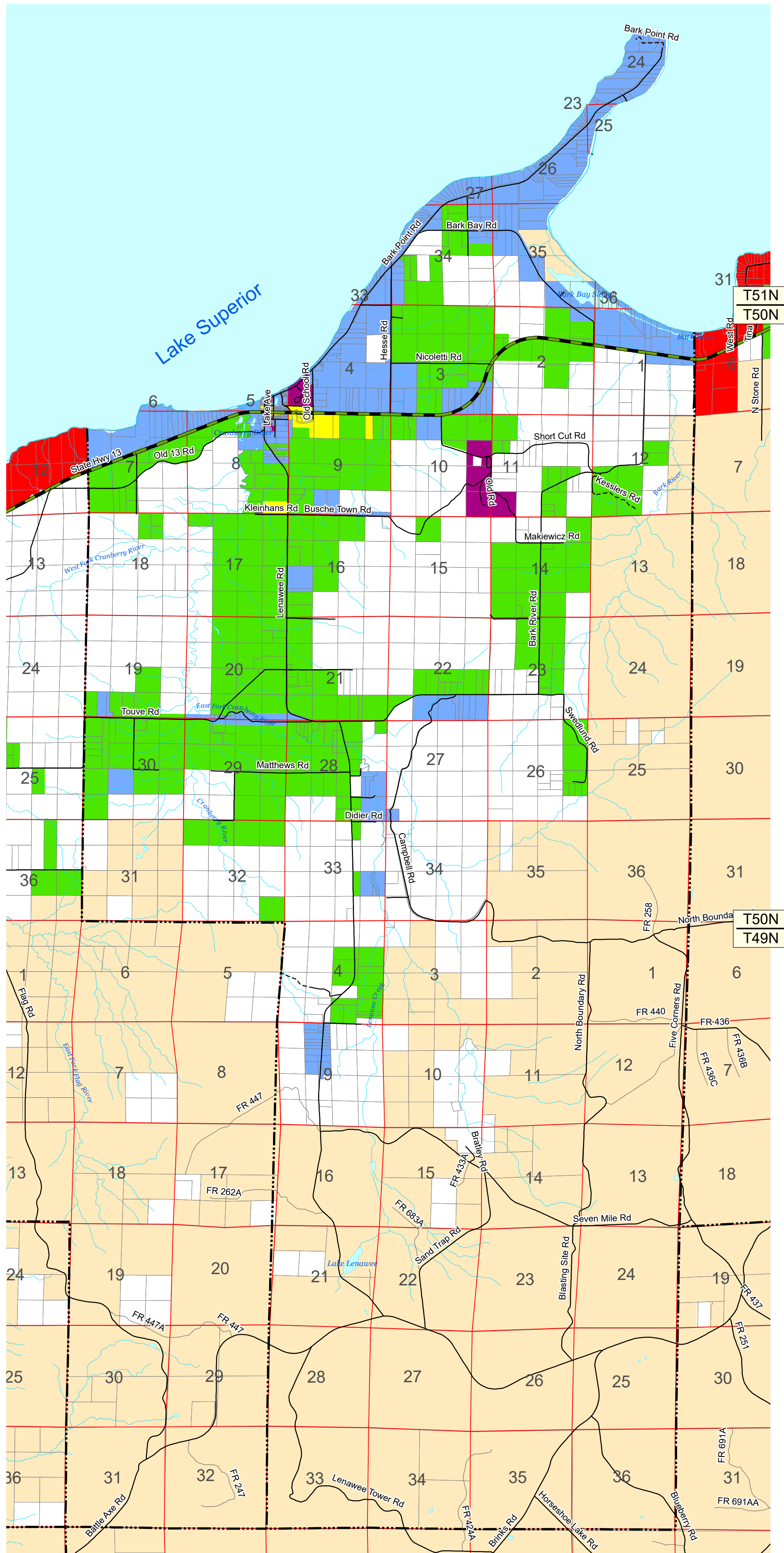


Town of Clover Zoning Districts



County Zoning Districts

- (R1) - Residential - 1
- (R2) - Residential - 2
- (R3) - Residential - 3
- (R4) - Residential - 4
- (C) - Commercial
- (I) - Industrial
- (M) - Municipal
- (F1) - Forestry - 1
- (F2) - Forestry - 2
- (A1) - Agricultural - 1
- (A2) - Agricultural - 2
- (W) - Conservancy
- (R-RB) - Residential - Recreational Business

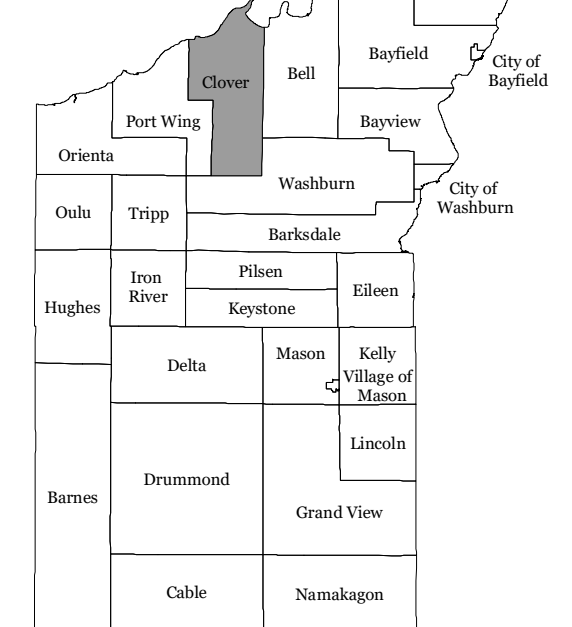
Roads

- Federal Highway
- State Highway
- County Road
- Town Road
- Forest Road
- - - Private Road

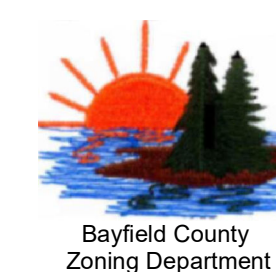
Other Symbols

- - - MCD Boundary
- Section Lines
- Parcels
- 16000 Address Grid
- ~ Streams
- ~ Lakes

Bayfield County

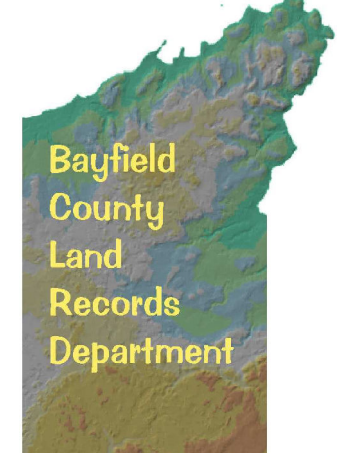


ZONING INFORMATION
FURNISHED BY:



Bayfield County
Zoning Department

CARTOGRAPHY
BY:



Bayfield County
Land Records
Department

The Zoning Districts portrayed on this map were derived from the Official Bayfield County Zoning District Map maintained by the Zoning Department. Bayfield County makes no warranty with respect to accuracy or completeness of this map and assumes no liability for its use or misuse. This map was last updated on May 12, 2022.